

Rab5C

Catalog Number: 21038

Gene Symbol: RAB5C

Description: Anti-Rab5C Rabbit Polyclonal Antibody

Background: Rab5, consists of three isoforms, Rab5A, Rab5B, and Rab5C, is a small GTPase that is localized to early endosomes. It regulates the fusion between endocytic vesicles and early endosomes, as well as the homotypic fusion between early endosomes.

Immunogen: A synthetic peptide from Rab5C

Tested Applications: ELISA, WB, IHC

Recommended Dilutions:

ELISA 1:100-1:5000

WB 1:100-1:1000

IHC 1:100-1000

Concentration: 0.2 mg/ml

Host: Rabbit

Clonality: Polyclonal

Purity: Purified from serum

Format: Liquid

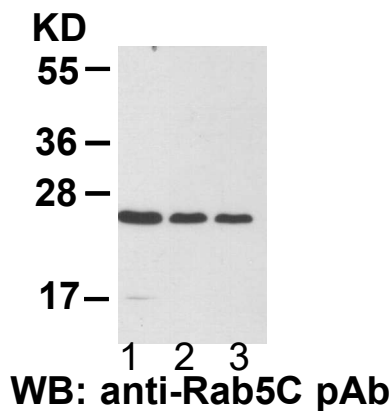
Preservative: No

Constituents: PBS (without Mg^{2+} and Ca^{2+}), pH7.4, 150 mM NaCl, 50% glycerol

Species Reactivity: Rab5C antibody recognizes Rab5C from vertebrates.

Storage Conditions: Store at $-20^{\circ}C$. Avoid freeze / thaw cycles

Western blot:



EC-1 (lane 1), HEK-293T (lane 2) and MEF (lane 3) cell lysates were used for Western blot with anti-Rab5C polyclonal antibody (Cat. # 21038).

FOR RESEARCH USE ONLY. NOT FOR DIAGNOSTIC APPLICATIONS